

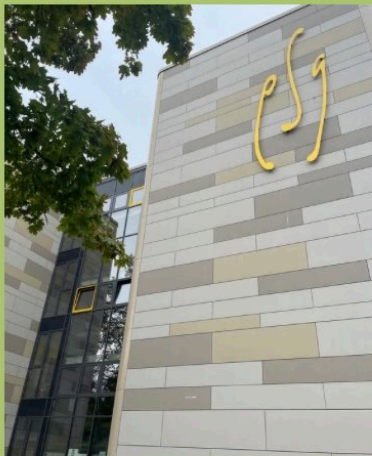
Find your way
through the



- | | |
|---------------------------------|--------------------|
| 1- staff entrance | 10- climbing wall |
| 2- main entrance | 11- container |
| 3- toilets | 12- sports field |
| 4- cafeteria | 13- back yard |
| 5- bicycles | 14- open classroom |
| 6- garage & caretaker apartment | 15- sprint track |
| 7- main yard | 16- Queich (river) |
| 8- beach volley ball field | |
| 9- wood chip pit | |

Front view of the ESG

The ESG consists of four floors



In case of emergency there is an eviction plan on every classroom door



Outside the school building there is our gym and the bicycle stands



Some classes use the gym at the IGS, which is the school right next to the ESG





There are three toilets in the Esg. One on the ground floor, one on the second floor and one on the third floor. The first floor only has toilets for the teachers.



Schedule:

School starts at 7:57, and the first break is from 9:30 to 9:45. Students can only go to the staff room at the second break, which is from 11:15 to 11:30. Normally the school day ends at 1pm. The lunch break is from 13:00 to 13:45. The MSS has longer school days, so there is another break from 15:15 to 15:30. The school bell only rings at the end of breaks and not at the end of lessons.

General rules:

Phones are not allowed on the school ground. Except for the MSS all students must spend their breaks on the school yard, unless it is raining.



The library is on the first floor

The headmaster's office : room 114



The cafeteria to the left:

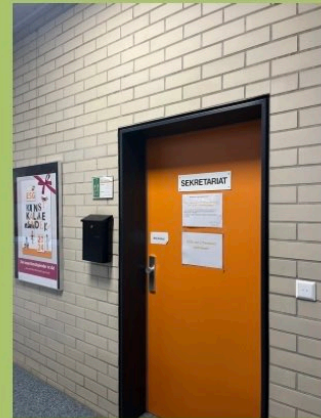
A variety of snack, drinks and sweets are offered.



The secretaries' office to the right:

You can go there if you need help or Information

If you feel unwell, you can go there to contact your parents



Janitors' room:
on the right side of the entrance.
lost items are kept there to be picked up



Teachers room: (first floor)

You can find your teachers there in case of sickness or and other problems

